



# Steinberg Cubase LE 4 Software Setup Guide

## Contents:

<b>Cubase LE 4 Installation</b> .....	<b>2</b>
Windows XP Installation .....	2
Windows Vista Installation.....	3
Macintosh Installation.....	5
<b>Setting up Cubase with your Alesis Audio device</b> .....	<b>6</b>
General Setup (for all devices) .....	6
Alesis IO 2 .....	7
Alesis MultiMix USB (1.0) Series Mixers .....	7
Alesis MultiMix USB 2.0, MultiMix FireWire, IO 14, and IO 26 .....	8
Alesis MasterControl .....	11
<b>Creating a Project</b> .....	<b>16</b>
<b>Registration</b> .....	<b>19</b>
Find and write down your Soft-eLicenser code.....	19
Register Cubase LE 4 with Steinberg .....	20
Request an Activation Code for Cubase LE 4 .....	21
Activate your installation of Cubase LE 4.....	21

# Cubase LE 4 Installation

## ***Windows XP Installation***

1. Insert the installation DVD into your computer's drive.
2. The installer program should automatically launch after a few moments. If it does not open automatically, perform the following:
  - a. Double-click the **My Computer** icon on your desktop.
  - b. In the window that opens, double-click the disk named, **Cubase LE 4**.
  - c. In the next window, open the folder titled, **Cubase LE 4 for Windows**.
  - d. Then, open the application titled, **Setup.exe**
3. When the installer application opens, click the button labeled **Install**
4. In the next window, read the End-User License Agreement, and then click the box titled **I accept the terms in the License Agreement**, then click **Next**.
5. The next window, titled **Install Location**, allows you to select the location on your computer that Cubase LE 4 will be installed. In most cases, you should use the default settings which are already selected here, and simply click **Next**.
6. Then, on the next screen, click **Install**.
7. A progress bar will be displayed while the installation proceeds. When it is finished, a second installer, the **Syncrosoft License Control Setup** will open. This application installs the required product registration components onto your computer. When it appears, click **Next** to proceed.
8. In the next window, read the End-User License Agreement, and then click the box titled **I accept the license agreement**, then click **Next**.
9. In the window that appears after the software has been installed, click the box titled **Start 'License Control Center' after installation**. Then click **Finish**.
10. The installation process will complete, and the License Control Center Application will open. Proceed to Step 2 of the **Registration** section below.

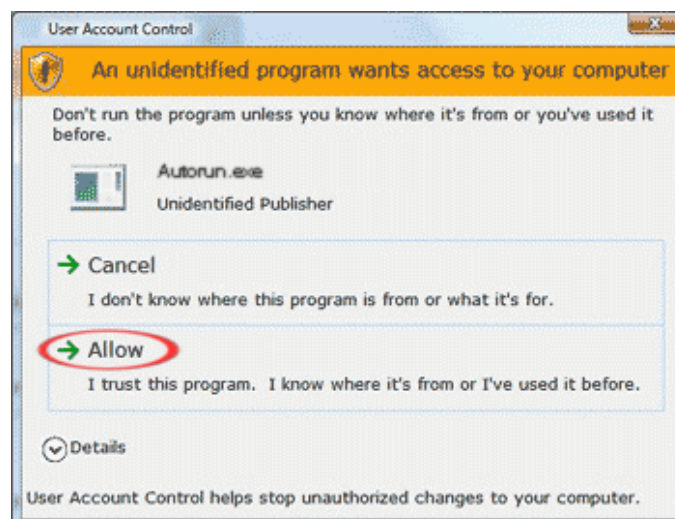
## Windows Vista Installation

1. Insert the installation DVD into your computer's drive.
2. A window titled "AutoPlay" (**Fig. 1**) may appear. If it does, double-click **Run Autorun.exe**



**Fig. 1**

3. A window titled "User Account Control" (**Fig. 2**) may then appear reporting that **An unidentified program wants access to your computer**. Click **Allow**.



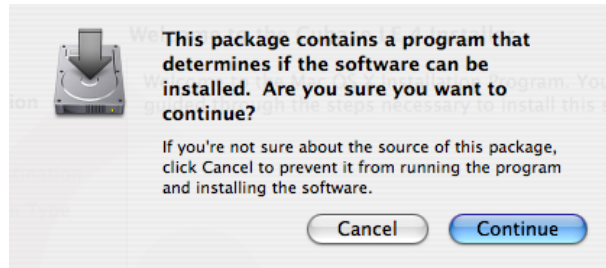
**Fig. 2**

4. In the window that opens, double-click the folder titled **Cubase LE 4 for Windows**.
5. In the next window, double-click the program titled **Setup**.


6. The Cubase LE 4 installation program will launch. In the window that opens, click **Install**.
7. In the next window, read the End-User License Agreement, click **I accept the terms in the License Agreement**, then click **Next**.
8. The next window, titled **Install Location**, allows you to select the location on your computer that Cubase LE 4 will be installed. In most cases, you should use the default settings which are already selected here, and simply click **Next**.
9. Then, on the next screen, click **Install**.
10. A progress bar will be displayed while the installation proceeds. When it is finished, a second installer, the **Syncrosoft License Control Setup** will open. This application installs the required product registration components onto your computer. When it appears, click **Next** to proceed.
11. In the next window, read the End-User License Agreement, click the box titled **I accept the license agreement**, then click **Next**.
12. A window titled **Windows Security** may appear, reporting that **Windows can't verify the publisher of this driver software**. If this window appears, click **Install this driver software anyway**.
13. In the window that appears after the software has been installed, click the box titled **Start 'License Control Center' after installation**. Then click **Finish**.
14. The installation process will complete, and the License Control Center Application will open. Proceed to Step 2 of the **Registration** section below.

## Macintosh Installation

1. Insert the installation DVD into your computer's drive.
2. On the DVD, locate and open the folder, **Cubase LE 4 for Mac OS X**. Inside, this folder, double-click the **Cubase LE 4.mpkg** installer package to begin the installation.
3. The following message (**Fig. 3**) will appear on the screen. Click **Continue**



**Fig. 3**

4. This window will close, and **Welcome to the Cubase LE 4 Installer** will be displayed. Click **Continue** again.
5. In the next window, read the Software License Agreement, and then click **Continue**, then click **Agree**.
6. You will then be asked to select which hard drive you would like to install the Cubase onto. Choose a drive, and click on its name to select it. If you only have only hard disk in your computer, only one option will be presented here.
7. Click **Continue**, and then click **Install**.
8. A window titled **Authenticate** will appear. Enter your Macintosh Username Password and click **OK**. For help with this password, click the  icon in the bottom-left of the window.
9. A progress bar will be displayed while the installation proceeds. When it is finished, the screen will read **The Software was installed Successfully**. Click the **Close** button.

# Setting up Cubase with your Alesis Audio device

## **General Setup (for all devices)**

1. Connect your USB device to a USB port on your computer. Some Alesis USB audio devices have power cords, and some do not. If your device has a power cord, connect to an electrical outlet, and turn on the device.
2. Launch the Cubase LE 4 application.
  - **Windows XP and Vista:** Navigate to the **Cubase LE 4** application by using the Start menu at the bottom-left of your screen: select Start > Programs > Steinberg Cubase LE 4 > Cubase LE 4.
  - **Macintosh:** The **Cubase LE 4** application is located in the “Applications” folder on your Hard Disk. Double-click the program to open it.
3. Depending on your computer configuration, the first time you launch Cubase, you may be presented with an error message indicating some problem with the sound setup. By going through this setup guide, and properly setting up Cubase LE 4, any such errors will be resolved. If an error is displayed at startup, click **OK** to continue.
4. Once Cubase LE 4 is completely started up, select the **Devices** menu from the top of the screen and choose **Device Setup**.
5. In the window that opens, select **VST Audio System** from the left-hand side of the screen.
6. The **ASIO Driver** field on the right-hand side is where you select the audio input/output device that Cubase LE 4 will use. Below is a list of Alesis Audio interfaces, and the correct **ASIO Driver** selection for each device for Windows and Macintosh platforms. Make the appropriate **ASIO Driver** selection for your device.

<b>Alesis Audio Device</b>	<b>Windows ASIO Driver</b>	<b>Macintosh ASIO Driver</b>
MultiMix USB Series.....	ASIO DirectX Full Duplex Driver..	USB Audio CODEC
MultiMix USB 2.0 Series.....	Alesis USB Audio Device.....	Alesis USB Audio Device
MultiMix FireWire Series.....	Alesis FireWire.....	Alesis 1394
IO 14 and IO 26.....	Alesis FireWire.....	Alesis 1394
MasterControl.....	Alesis FireWire.....	Alesis 1394
IO 2.....	Alesis IO 2 USB ASIO.....	io 2

When you change the selected **ASIO Driver**, a window which reads, **Do you want to switch the ASIO driver?** may appear. If it does, click **Switch**.

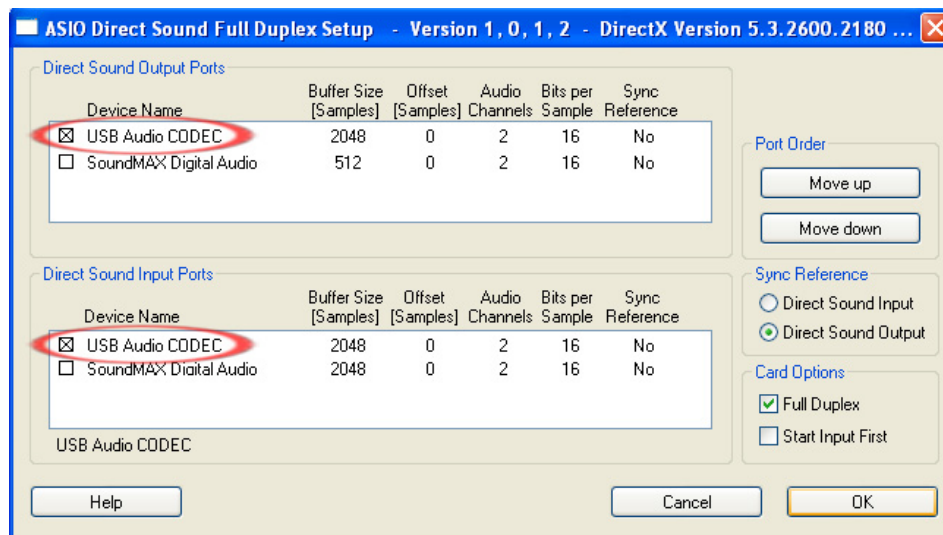
## Alesis IO|2

If you are using the **Alesis IO|2**, click **Apply** (if available), then **OK** to close the **Device Setup** window. Then proceed to the **Creating a project** section below.

## Alesis MultiMix USB (1.0) Series Mixers

If you are using a **MultiMix USB Series Mixer** on a **Windows PC**, and have selected **ASIO DirectX Full Duplex Driver** for the **ASIO Driver** in the **General Setup** section of this guide (see above), perform the following:

1. Click **ASIO DirectX Full Duplex Driver** underneath **VST Audio System** on the left-hand side of the screen.
2. Then, click the **Control Panel** button on the right-hand side of the screen.
3. A window will open which has two white rectangular sections. Place an **X** next to **USB Audio CODEC** in both the upper and lower sections as (see **Fig. 4**).



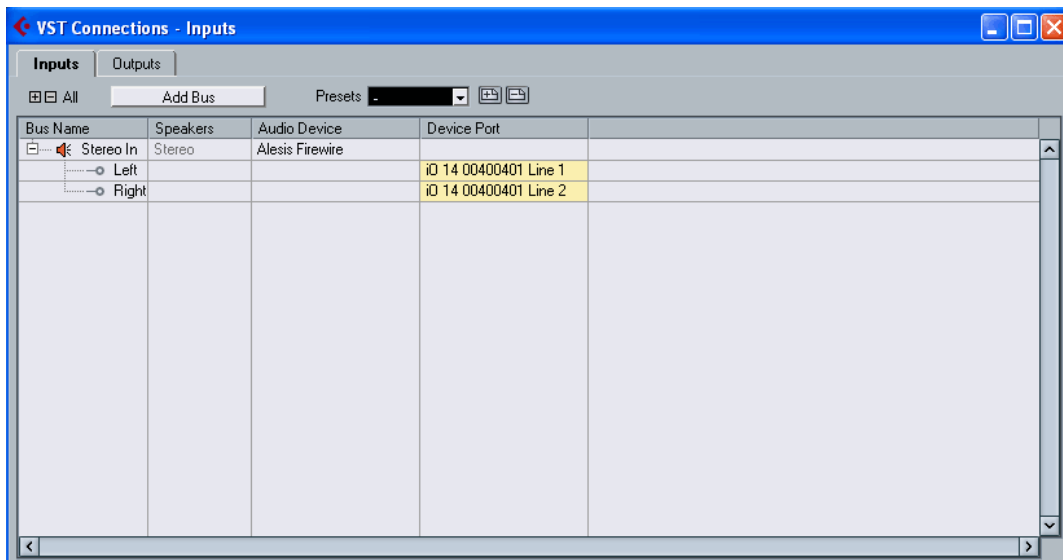
**Fig. 4**

7. Click **OK** to close the window. Then, click **Apply** (if available), then **OK** to close the **Device Setup** window. Now proceed to the **Creating a project** section below.

## ***Alesis MultiMix USB 2.0, MultiMix FireWire, IO/14, and IO/26***

Cubase LE 4, by default, starts up with only two inputs enabled, even if you have an 18 input sound card or interface. Before all the inputs will be available to your system, you need to set up your VST Connections. This section of the guide covers several products. Some of the names, titles and images may be slightly different from what you see on your screen, but the set up process remains the same.

1. In Cubase LE 4, click on the **Device** menu at the top of the screen and select **VST Connections**. It should look like this (**Fig. 5**):



**Fig. 5**

2. Click on **Inputs** at the top of the window.

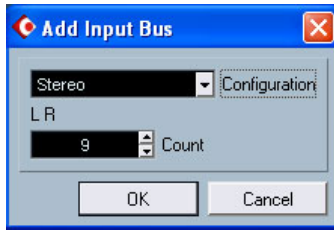
You'll notice that, under the **Inputs**, there are only two inputs showing up. You'll need to create a new configuration.

3. Click on the input titled under the **Bus Name** column and press the backspace key on your keyboard to delete it.

The VST connections window should now be empty. Next, you will create Stereo and Mono Input Busses for all of the inputs on your interface.

4. Click on the **Add Bus** button.





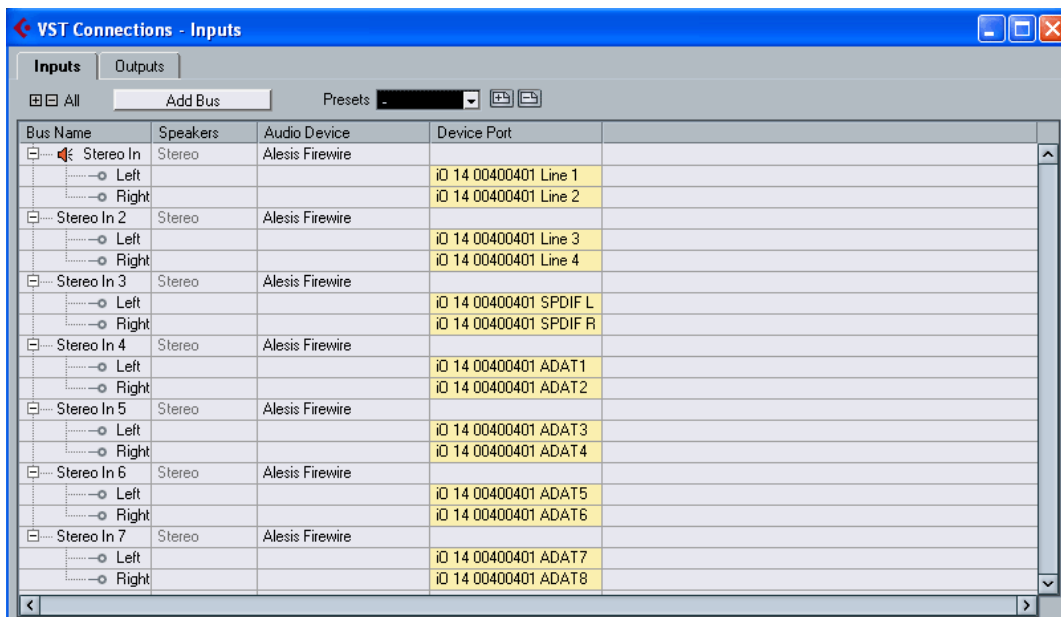
**Fig. 6**

5. Set **Configuration** to **Stereo** (**Fig. 6**).

Below is a list of Alesis interfaces, and the total number of supported stereo inputs.

<b>Alesis Audio Device</b>	<b>Stereo Input Busses</b>
MultiMix 8 USB 2.0	5
MultiMix 16 USB 2.0	9
MultiMix 8 FireWire	5
MultiMix 12 FireWire	7
MultiMix 16 FireWire	9
I/O 14	7
I/O 26	13

6. Set the **Count** to match the total number of stereo inputs that your interface supports. Then click **OK**. Your screen will now look something like this (**Fig. 7**):



**Fig. 7**

Now you will configure the Mono inputs for Cubase.

7. Click on **Add Bus** again.
8. Set **Configuration** to **Mono**.

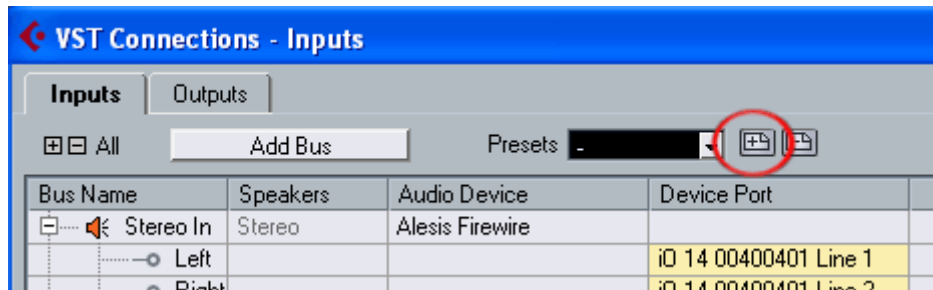
Below is a list of Alesis interfaces, and the total number of supported mono inputs.

<b>Alesis Audio Device</b>	<b>Mono Input Busses</b>
MultiMix 8 USB 2.0	10
MultiMix 16 USB 2.0	18
MultiMix 8 FireWire	10
MultiMix 12 FireWire	14
MultiMix 16 FireWire	18
I/O 14	14
I/O	26

9. Set the **Count** to match the total number of mono inputs that your interface supports. Then click **OK**. If you like, you can rename the inputs in the **VST Connections** window.

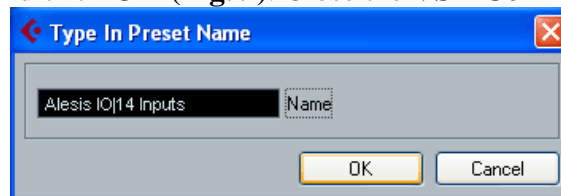
It is recommended that you save **VST Connections** settings so that they may be easily recalled.

10. Click on the **Add Preset** button (indicated with a red circle below in **Fig. 8**) to add a preset



**Fig. 8**

11. Name the preset, and click **OK** (**Fig. 9**). Close the **VST Connections** window.



**Fig. 9**

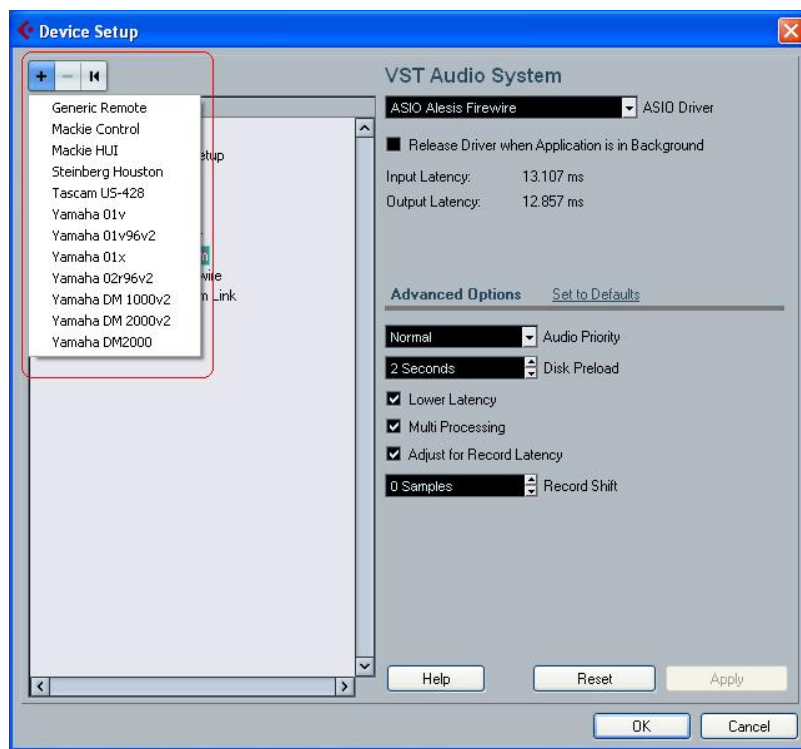
Now, all the inputs on your interface will be available to audio tracks you create in Cubase LE 4.

## Alesis MasterControl

### Control surface setup

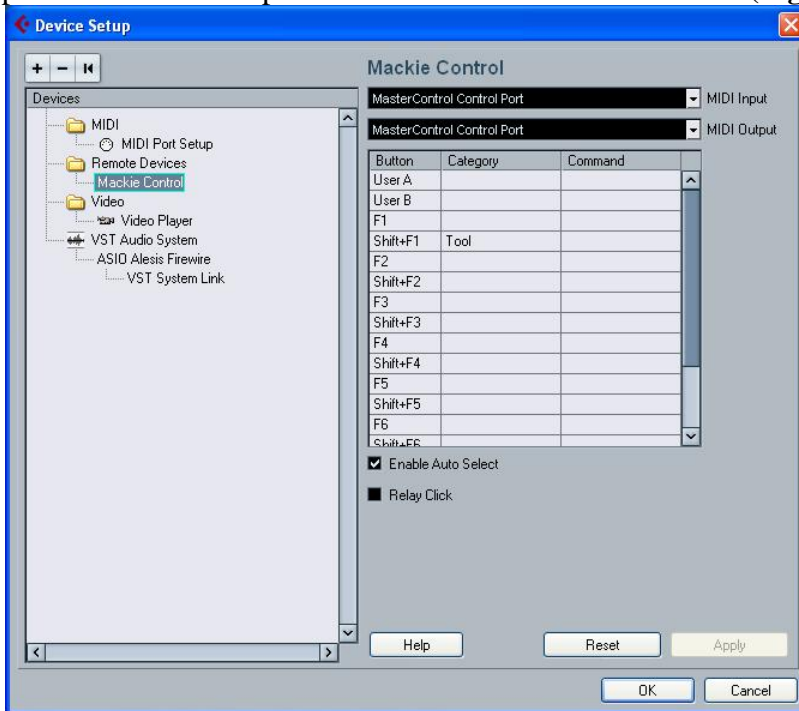
Cubase uses the “Mackie Control” protocol to communicate with the MasterControl. This configuration must be set up before the MasterControl’s control surface will begin to work.

1. Ensure that the “Cubase / Nuendo” preset is selected via the MasterControl’s LCD screen. Press Preset/Home on the MasterControl and turn the top-right encoder to make this selection.
2. In Cubase LE 4, click on the **Device** menu and then choose **Device Setup**. From the top of the menu, click the “plus” sign. The screen should look like this, with the relevant portion highlight in red (**Fig. 10**):



**Fig. 10**

3. Now, choose the “Mackie Control.” (Do not choose “Mackie HUI.” HUI devices operate on a different protocol.) Once the “Mackie Control” is added, assign the “MIDI Input” and “MIDI Output” to “MasterControl Control Port” (**Fig. 11**):



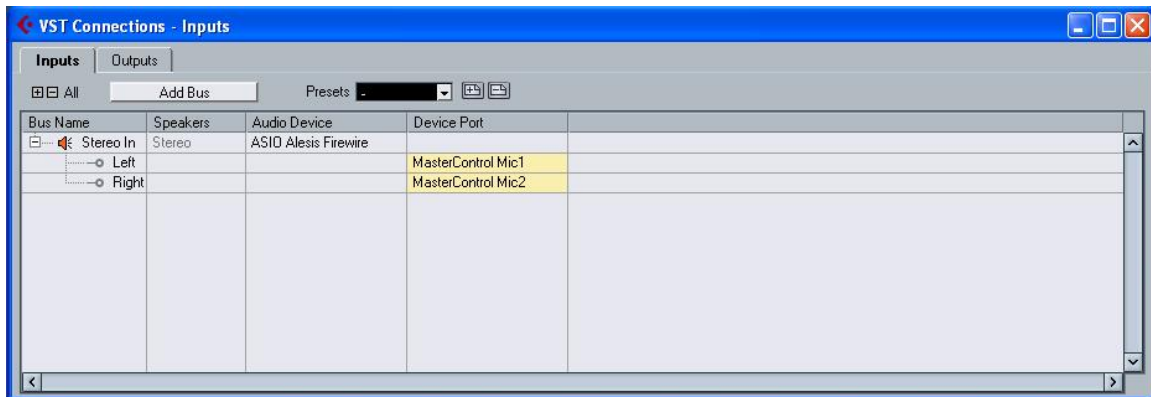
**Fig. 11**

Once you do this, the MasterControl is ready for control surface operation.

## Audio configuration

Cubase LE 4, by default, starts up with only two inputs enabled, even though the MasterControl allows for 26 simultaneous inputs. Before all the inputs will be available to your system, you need to set up your VST Connections.

1. In Cubase LE 4, click on the **Device** menu at the top of the screen and select **VST Connections**. It should look like this (**Fig. 12**):



**Fig. 12**

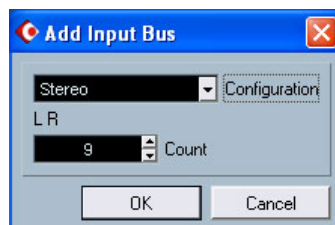
2. Click on **Inputs** at the top of the window.

You'll notice that, under the **Inputs**, there are only two inputs showing up. You'll need to create a new configuration.

3. Click on the input titled under the **Bus Name** column and press the backspace key on your keyboard to delete it.

The VST connections window should now be empty. Next, you will create Stereo and Mono Input Busses for all of the inputs on your interface.

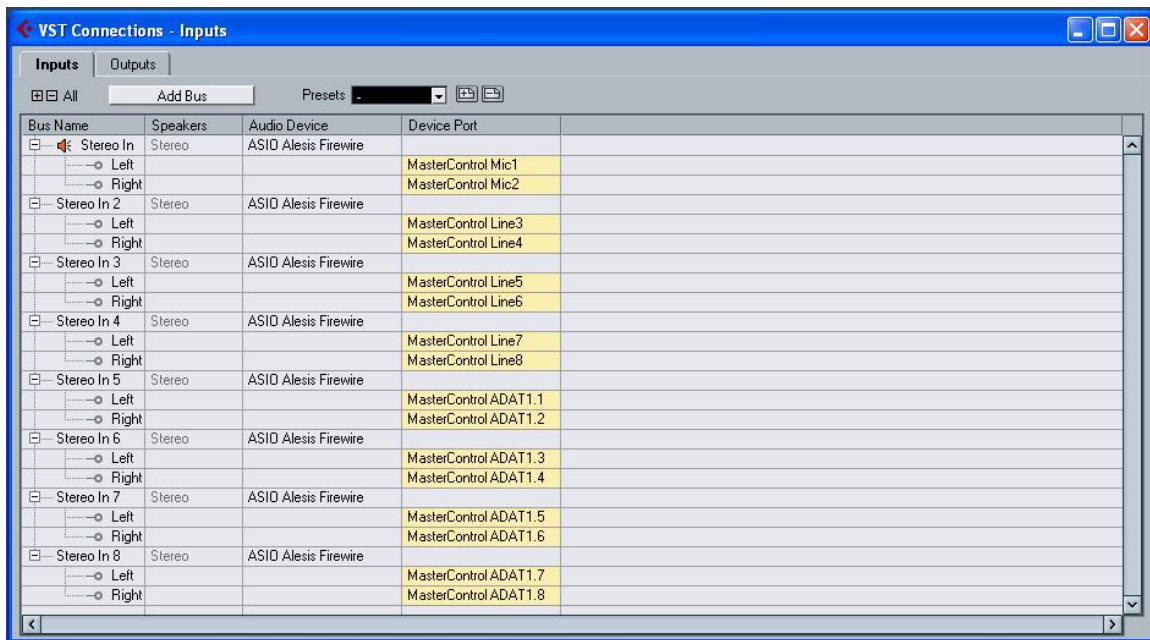
4. Click on the **Add Bus** button.



**Fig. 13**

5. Set **Configuration** to **Stereo** (**Fig. 13**).

6. Set the **Count** to match the total number of stereo inputs that you want to use simultaneously. Then click **OK**. Your screen will now look something like this (**Fig. 14**):



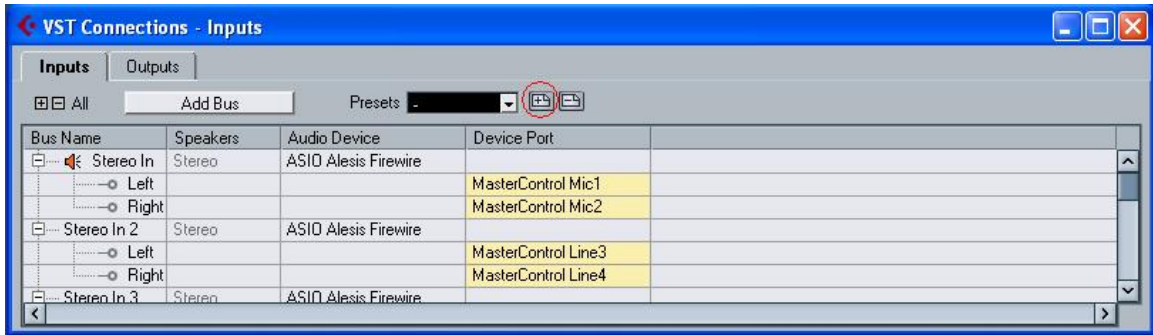
**Fig. 14**

Now you will configure the Mono inputs for Cubase.

7. Click on **Add Bus** again.
8. Set **Configuration** to **Mono**.
9. Set the **Count** to match the total number of mono inputs that you want to use simultaneously. Then click **OK**. If you like, you can rename the inputs in the **VST Connections** window.

It is recommended that you save **VST Connections** settings so that they may be easily recalled.

10. Click on the **Add Preset** button (indicated with a red circle below in **Fig. 15**) to add a preset



**Fig. 15**

11. Name the preset, and click **OK** (**Fig. 16**). Close the **VST Connections** window.



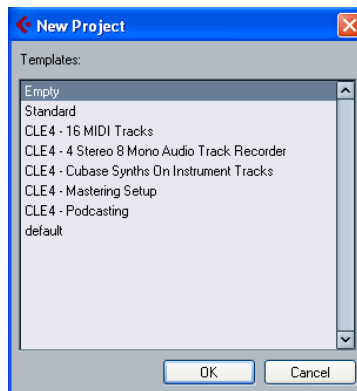
**Fig. 16**

Now, all the inputs you want to use will be available to audio tracks you create in Cubase LE 4.

## Creating a Project

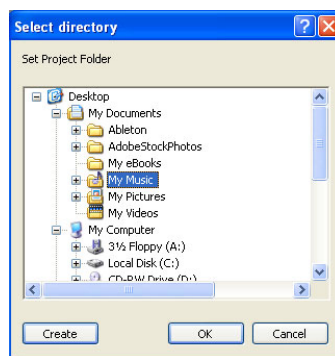
**Note:** This document is not intended to replace your Cubase Operation Manual (accessible from the **Help** menu at the top of the screen in Cubase). It is intended to get you started your very first time using Cubase LE, and to help you ensure that your Alesis interface is installed and set up properly. You will need to refer to this additional documentation to learn to make the most of your recording software.

1. To begin using Cubase, select the **File** menu at the top of the screen and choose **New Project**.
2. A screen will open asking you to create an Empty project or create one from an existing template. Choose **Empty (Fig. 17)**.



**Fig. 17**

3. Another window will open asking you to “Set Project Folder” (**Fig. 18**). Use the mouse to choose the location on your hard drive where you would like to save the Cubase project you are about to create. If you would like to create a new folder for your project, click **Create**.

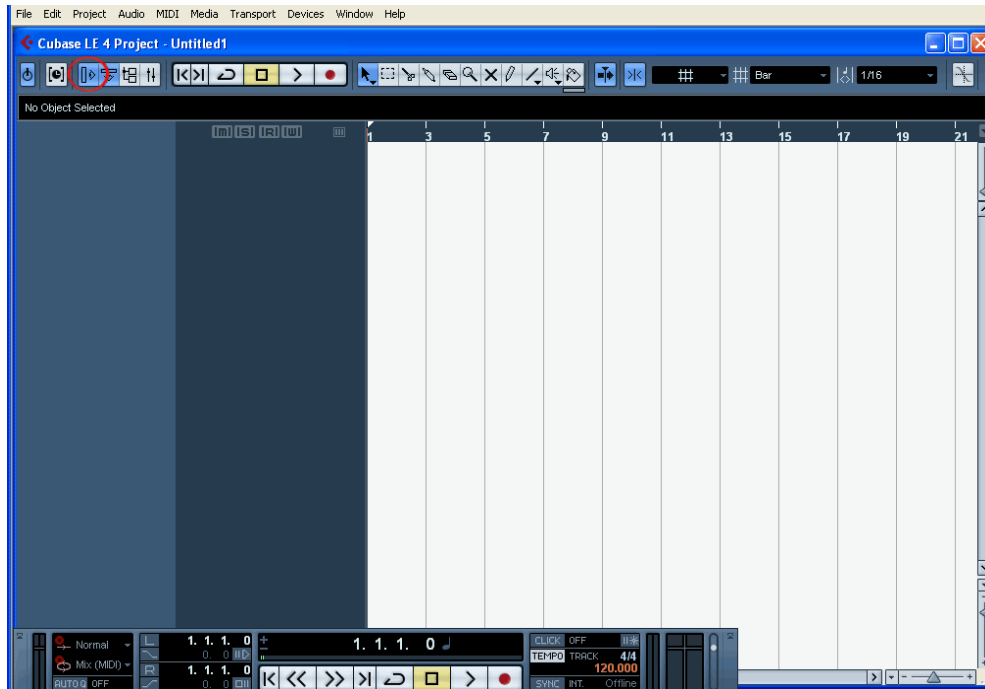


**Fig. 18**

4. With the desired location highlighted, click the **OK** button.



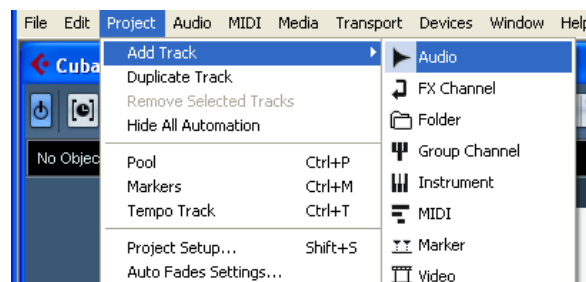
You will be presented with a blank project window that is divided into sections. You should see two grey columns on the left and in the middle, and a timeline on the right, with a black ruler over the top. If there is only one grey column click on the first square button in the upper left of your screen to enable it (indicated by a red circle in **Fig. 19**).



**Fig. 19**

**Hint:** The Cubase user interface has many icons and buttons that are not labeled. If you hold your mouse over a button or icon for a few seconds, some text will appear that describes the button's function.


5. Select the **Project** menu from the top of the screen and choose **Add Track** and then **Audio** (**Fig. 20**).



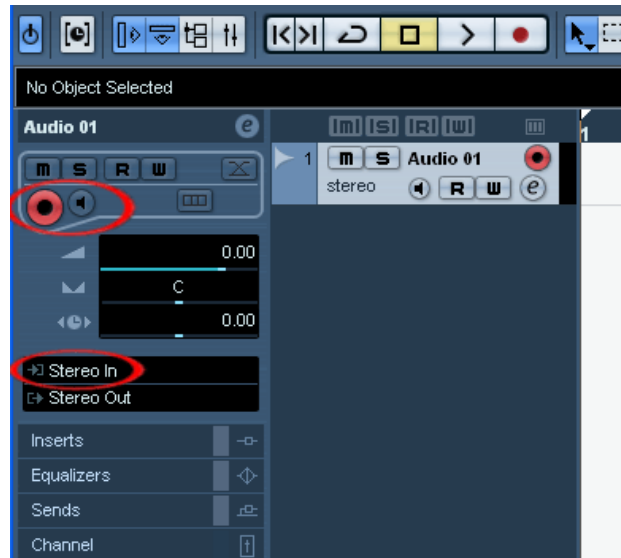
**Fig. 20**

A new Audio track will be created.

Each Audio or MIDI track you create in Cubase has an individual input setting (Figure 12). This setting selects which physical input on your Audio/MIDI interface will be recorded onto that track.



Each track also has an individual “record enable” button  (Fig. 21)

6. On the left-hand panel of the Cubase window, select an input for your Audio track (Fig. 21)



**Fig. 21**

7. Once you have selected the input for your track (Fig. 21) and your track or tracks have been “record enabled,” you can begin recording by pressing the master **Record** button which located on the floating Transport Panel at the bottom of the screen (Fig. 19).

**Important:** After recording a track, you need to turn off “record enable” on that track before you will be able to hear what you have recorded. Having a track record enabled  or monitor enabled  will sometimes prevent audio that is already on that track from playing back.

For further information on recording, mixing and exporting music from Cubase, please refer to the Cubase **Operation Manual** which was installed along with your Cubase software. You can easily access this documentation from within Cubase by selecting the **Help** menu at the top of the screen, then **Documentation**, then choosing either **Getting Started**, or **Operation Manual**. The **Getting Started** guide has three excellent tutorials that will introduce you to many of the functions and operations of the program.

## Registration

Cubase LE 4 requires **online** registration. After finishing installation, you have 30 days or 3000 starts left before you have to register your product.

### ***Find and write down your Soft-eLicenser code***

1. Before you begin the registration process, you will need to locate, and write down your Soft-eLicenser number. Along with installing Cubase LE 4, the installer application installed a program called **License Control** on your computer. This program assigns and manages your Soft-eLicenser number for Cubase LE 4. Navigate to and open the **License Control** application:

- **Windows XP and Vista:** Navigate to the **License Control** application by using the **Start** menu at the bottom-left of your screen: select Start > Programs > Syncrosoft > License Control Center.
- **Macintosh:** The **License Control** application is located in the **Applications** folder on your Hard Disk. Double-click the program to open it.

2. In the **License Control Center** application, the **Soft-eLicenser** is listed as shown in red in **Fig. 20** below. Write down the 20 digit code. You will need it later on in the registration process. Once you have written the **Soft-eLicenser** code down, close the **License Control Center** application.



**Fig. 22**

## **Register Cubase LE 4 with Steinberg**

1. Launch the **Cubase LE 4** application.
  - **Windows XP and Vista:** Navigate to the **Cubase LE 4** application by using the Start menu at the bottom-left of your screen: select Start > Programs > Steinberg Cubase LE 4 > Cubase LE 4.
  - **Macintosh:** The **Cubase LE 4** application is located in the **Applications** folder on your Hard Disk. Double-click the program to open it.
2. When you launch Cubase LE 4 you will be prompted to register. If you have an internet connection, click **Register Now**. An internet connection is *required* to register Cubase LE 4. If the program is not registered, it will cease to function after 30 days or 3000 starts.
3. Clicking **Register Now** will open your web browser, taking you to Steinberg's registration page for Cubase LE 4. Click the link titled **Start Cubase LE 4 activation now** at the bottom of the page.
4. On the next page, click the link titled **Create user account**.
5. On the next page, select your country from the drop-down list and then click, **Next**.

Fill in your contact information on the next page, making sure to complete all required fields with a "\*" next to them. **Click Create account now**. The next page will read **Account successfully created, an e-mail has been sent to your e-mail address**.

6. Check your email, and look for a new message from **MySteinberg** with the subject **Log into MySteinberg**. Open this email, scroll to the bottom, and click the link below the text **Please activate your account by clicking on the link below**.
7. You will be taken back to the MySteinberg website. Enter the login and password information (which you chose when you created your MySteinberg account) and click **Log In**.
8. On the next page, under the heading **Register a product**, click the link titled **More**.
9. Again, on the next page, under the heading **Register a product**, click the link titled **More**.
10. Select **Product with Steinberg Key or Soft-eLicenser** on the next page, and click **Next**.
11. Enter the 20-Digit (case-sensitive) Soft-eLicenser code you wrote down earlier into the field titled **number\*** (see Step 2 of the **Find and write down your Soft-eLicenser code** section above)
12. Enter **Cubase LE 4** into the field titled **Please enter a name**.
13. Click the **Register product(s)** button.
14. If you entered your code correctly, the next screen will read **The Steinberg Key [YourCodeHere] has been registered, but does not contain any active licenses**.

## ***Request an Activation Code for Cubase LE 4***

**Note:** If you are beginning this section of the guide, and are not already logged on to your MySteinberg account, visit [https://www.steinberg.net/1069\\_1.html](https://www.steinberg.net/1069_1.html) and log in using the username and password you selected in Steps 3-8 of the Registering Cubase LE 4 with Steinberg section above. Once logged in to your My Steinberg account, proceed with the steps below.

15. Click the link titled **Activation & Reactivation** on the left-hand side of the page.
16. Then click the link titled **Cubase LE 4** on the left-hand side of the page.
17. Under the heading **Permanent Activation**, click the link titled **More**.
18. Enter the 20-Digit (case-sensitive) Soft-eLicenser code you wrote down in Step 2 above into the field titled **Soft-eLicenser number**
19. In the field titled **Hardware Manufacturer**, select **Alesis** from the drop-down menu.
20. Click **Request Activation Code**.
21. If you entered your code correctly, the next page will read **The Soft-Licenser number [YourCodeHere] you just have entered is correct. We have sent an Activation Code for Cubase LE 4 to the email address [YourEmailHere]**.
22. Check your email, and look for a new message from **Steinberg Media Technologies GmbH** with the subject **Activation Code – Cubase LE 4**. Open this email.
23. This email contains your Cubase LE Activation code. Print this email out for your records. You will also need to have this code handy to complete the registration process. Copy the Activation Code by highlighting the text the email with your mouse, then select the **Edit** menu at the top of the screen and choose **Copy**.

## ***Activate your installation of Cubase LE 4***

24. Launch the **License Control** application by following the instructions from **Step 1** of the **Registration** Section above.
25. Select the **Wizards** menu at the top of the screen, and choose **License Download**.
26. When License Download Wizard opens, click **Next**.
27. In the next window, enter the 32-Digit (case-sensitive) **Activation code** from the email you just received. If you copied the text from your email in Step 23 above, you can use the paste command to enter it all at once. Click on the first white field at the top of the screen, and type **[Ctrl+V]** on **Windows**, or **[Apple+V]** on the **Macintosh** to paste the text you copied earlier.
28. Once the Activation code has been entered, click **Enter**, then lick **Next**.
29. On the next page, click **Start**.
30. The License Download process will begin, and a progress bar will be displayed on the screen. When the process is finished, a window will appear indicating that the process has completed. Click **OK** to close this window, then click **Finish** to close the **License Download Wizard**. You will be returned to the **License Control Center**.
31. Close the **License Control Center**.